

Year 6 Newsletter

Autumn 2024

04/09/24



Welcome to Year 6!

A warm welcome to Year 6. We do hope you all had a wonderful summer holiday break and that the children are ready and raring to go for the year ahead. Newsletters detail what we intend to focus on in class, what you can do to help at home. The aim is to ensure that this is your handy reference point for dates, homework expectations and any other information that may be useful.

Positive behaviour rewards



In Year 6, we award the children with 'dojos', which can be for all manner of skills. We will often award these during lessons, asking the children to tally them in their planner to then add to their avatar during the day. At the end of the week, the dojos are converted into team points and top winners can also win rewards.

Year 6 is a wonderfully fulfilling year, with lots of exciting opportunities and experiences ahead. We, of course, have **Winmarleigh** to look forward to. We are also having our **Macmillan Coffee Morning** on **Friday 27th September**. After the coffee morning, Year 6 will then be leading assembly at 10.30, where they will do a presentation to Y6 parents, all about Winmarleigh. The children will be sending personal invites out but do pop the date in your diaries for now.

In June, the children will be completing their **Bikeability**. Bikeability is about so much more than teaching children to cycle. It embeds healthy habits, protects the planet, and creates safer and more peaceful neighbourhoods. There is an expectation that all our Year 6 children partake, even those who are not confident riders. As we move through the year, we would like the children to be practising and developing their cycling skills in preparation for the week.

We are all looking forward to working with you and your children this academic year. We are very much an open-door policy so if you would like to see me, please do come and catch me on the playground or contact me via the office to make either a telephone or face-to-face appointment.

Here's to a great year ahead!

Mrs Sutton, Mrs Platten & Mrs Bowman

Homework

Project/Learning log - a project will be set each half-term linking to the class topic.

Maths - weekly arithmetic sheets comprising of a range of fluency, reasoning & problem solving questions (Wednesday-Wednesday).

English - weekly grammar and reading activities (Wednesday - Wednesday). Spelling checks will be held every few weeks in class.

Times tables - practise 3 times a week on TT Rockstars.

Reading - reading at home on at least 3 occasions & planner signed by an adult. Planners will be checked on a Monday.

More details on how to support your child at home can be found on the last page of this newsletter.

Who are we?

The Year 6 team includes:

- **Mrs Sutton:** class teacher/Deputy Head
- **Mrs Bowman:** Teacher (Tuesday afternoon & Wednesday all day)
- **Mrs Platten:** class TA

Mrs Scott and Mrs Hawley will also be supporting on a Monday.

PE

PE will be on a **Monday** and a **Friday** so children will need to ensure they come to school in their PE kits on those days. Details of what the children should be wearing for PE can be found on the school website.

Monday (Mrs Sutton) - **Basketball/Outdoor adventurous activity (Winmarleigh)**

Friday (Mr Wilce) - **Performance-related fitness/Football**

What's on the

agenda for the autumn term?

English

Grammar

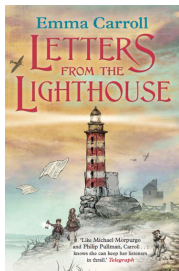
Over the coming weeks, we will be spending time recapping key knowledge and skills from the grammar that the children will have learnt so far in KS2 and extending onto other Y6 aspects of grammar with a particular focus on higher-level punctuation.



Non-Fiction: Discussion

This unit will provide children with the knowledge and understanding of discussion texts through the exploration of a range of texts and learning how to form a discussion text. There will be a particular focus on how to structure a discussion text, writing balanced views, using a range of conjunctions to switch from opposing sides of a topic and how to apply the range of punctuation taught at KS2.

Fiction - Historical Stories



After half-term, our focus text will be *Letters from a Lighthouse* by Emma Carroll, which will also link with our history unit on World War 2. The children will apply their reading skills in our comprehension work. They will also be looking at different viewpoints from characters and understand how character can be conveyed through the use of dialogue. They will also write in role as a character, using inferences made about them and write about character motives. This is a new text

that is very popular in Year 6 classrooms around the country. If your child would like to bring their own copy in after half-term, they are more than welcome to.

Poetry: Free verse

In this unit, we will be looking at and exploring examples of 'free verse poems' and some of the elements of form, including the poetic line, rhythm, stanzaic patterns and cadences.

Personal writing projects

Throughout the term, the children will also have opportunities to complete their own personal writing projects, giving them the chance to write various different pieces of writing and forms of their choice.

P.E

The focus is basketball and football this term. Our outdoor adventurous activity is in the form of Winmarleigh, where the children will develop a huge range of skills, including teamwork and problem-solving in lots of different ways.

Maths

In maths, we will be focusing on the as outlined below.

Number: Place value

- Read, write and compare numbers to 10 million
- Round numbers
- Negative numbers

Number: Addition, subtraction, multiplication & division

- Use mixed operations to solve problems using formal written methods.
- Long division
- Factors, common factors
- Common multiples
- Primes to 100
- Squares & cubes
- Order of operations
- Mental calculations and estimation
- Reason from known facts

Number: Fractions

- Simplify fractions
- Compare and order fractions.
- Add, subtract, multiply and divide fractions
- Fractions on a number line
- Add/subtract mixed numbers

Geometry: Position & Direction

- Coordinates (in four quadrants)
- Translation and reflection of shapes across four quadrants

Science

We begin the year looking at Electricity and will use simple series circuits, to help us answer questions about what happens when we try different components, for example, switches, bulbs, buzzers and motors. We will also learn how to correctly represent a simple circuit.

After half term our topic is Animals including humans where we will identify the main parts of the human circulatory system, and describe the functions of the heart, blood vessels and blood.



Music

Developing melodic phrases

In this unit, the Musical Spotlight is 'Developing Melodic Phrases'. We will continue to learn about all the foundational elements of music with a focus on melodic development, while working implicitly with all the other elements of music. We will compose melodies, improvise, perform and develop our understanding of musical elements that are within certain pieces of music. We will then focus on structure and form in our next unit 'Understanding structure & form'. Each month, we also focus on a particular musician.



<p>PSHE & Computing</p> <p>This term the children will begin to learn what mental health is, what factors can affect mental health, how to look after our mental health and where to get help if we have a problem with our mental health. They will also have their SRE talks - a letter will be sent out in due course.</p> <p>We will also spend time focusing on social media, tying in learning with our computing on e-safety. After half-term, the children will be learning how to use spreadsheets.</p>	<p>Geography/History</p> <p>The focus for this term is 'North America'. The children will identify the countries in North America and explore its physical and human geographical characteristics, as well as learning about time zones and climate zones. They will also complete their first homework project - more details to follow!</p> <p>After half term our history focus will be World War II. This is another new, exciting unit for Y6, and we will be exploring the causes of WWII, looking at how life in Britain changed during this period, and why it is such a significant event in our country's history.</p>
<p>Art</p> <p>This term the children will concentrate on drawing and painting. Linking with our Geography topic for this half of term, the children will use North American landscapes as inspiration for their own artwork. They will develop their knowledge of using perspective when sketching, and then using different shades and tones to create atmospheric perspective when painting.</p>	<p>R.E</p> <p>The topic of our R.E lessons, in the first half term, is Sikhism and what it means to be a Sikh. The children will learn about The Ten Gurus, focus on Guru Nanak's story and learn about the values and everyday lives of the Sikh people.</p> <p>After half term, the children will begin to investigate some core beliefs and practices of Christians as well as who the gospels are in the Bible and comparing some accounts from the Gospels.</p>
<p>French</p> <p>This term, the children will be learning all about a visit to Paris to begin with, including shopping, visiting a café, asking for directions and some cultural aspects about the capital. A teacher from Prince Henry's will deliver these sessions, which also supports transition for secondary school.</p>	<p>D.T</p> <p>After half-term, they will be learning how to apply their sewing skills to design and create a waistcoat, which is another exciting new unit for Year 6 this year.</p>



How can you support your child?

Homework is handed out on a Wednesday and brought in the following **Wednesday**. In Year 6, we expect children to take some responsibility for their own learning and as we move into the year, we hope children can work on aspects of their learning that they know they need to work on. At this present time, it would be helpful if you could continue to encourage and support your child in a range of home learning activities each week as outlined below.

Reading at home: Ideally, children need to be reading every night at home. As well as reading **fluently** and **at speed**, **ask questions** on what they've read to check their understanding. Children need to be reading a range of different texts and genres and most importantly, **ENJOY** what they are reading.

Times tables: Children need to know all their timetables by the end of Year 4 so, in order to help sustain their knowledge, the children can log-on to **Times Tables Rockstars** to help them to practise.

Maths: **Weekly arithmetic homework sheets** are valuable in supporting a range of different areas of children's maths on a weekly basis. These will help the children get used to answering a range of different maths questions on a regular basis. If the children are persistently finding some questions 'tricky', they can bring their sheets in and we will go through it with the children. Mrs Bowman will be working on some of the arithmetic on Wednesdays.

English (Grammar. Reading & spelling): **Grammar sheets** revise key aspects of the National Curriculum. English homework will alternate each week with **reading comprehension activities** for the children to complete.

We will be focusing on a word list each week and the children will be able to log into *Spelling Shed* to practise learning the words. Spelling quizzes will happen every few weeks.